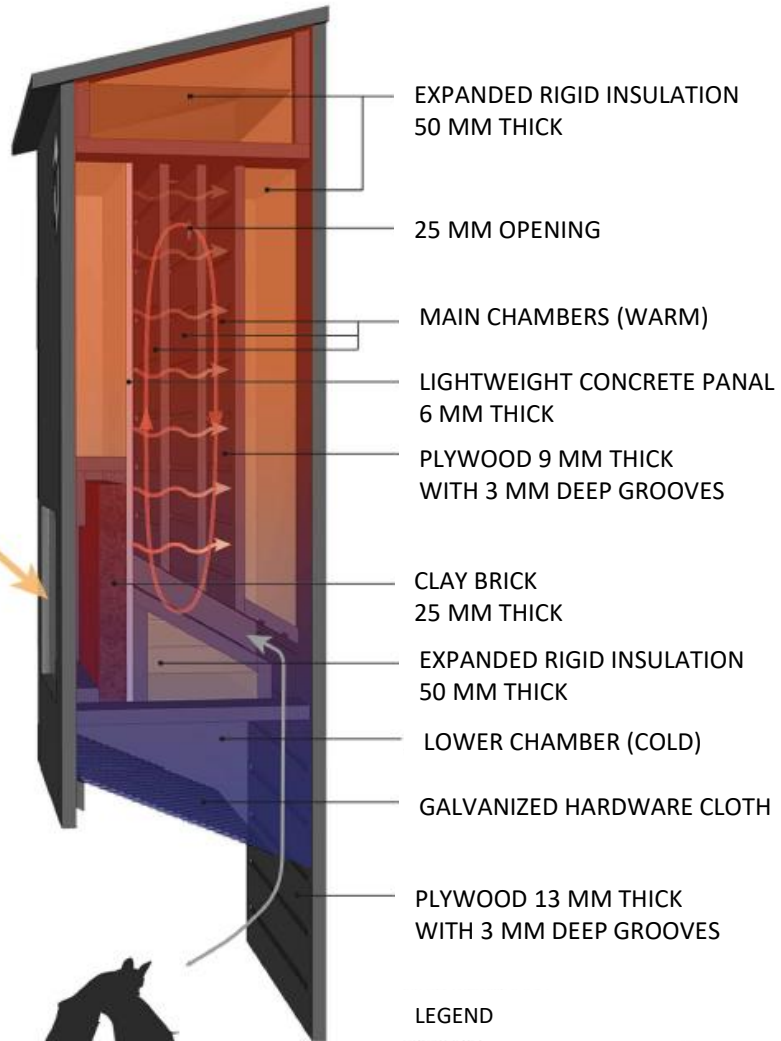




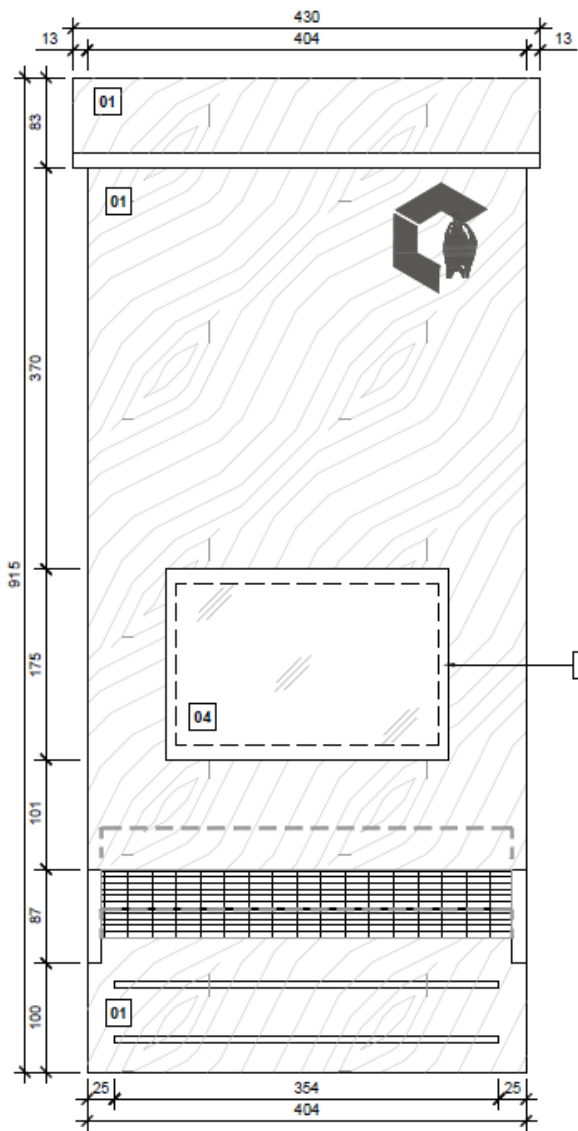
SUNLIGHT



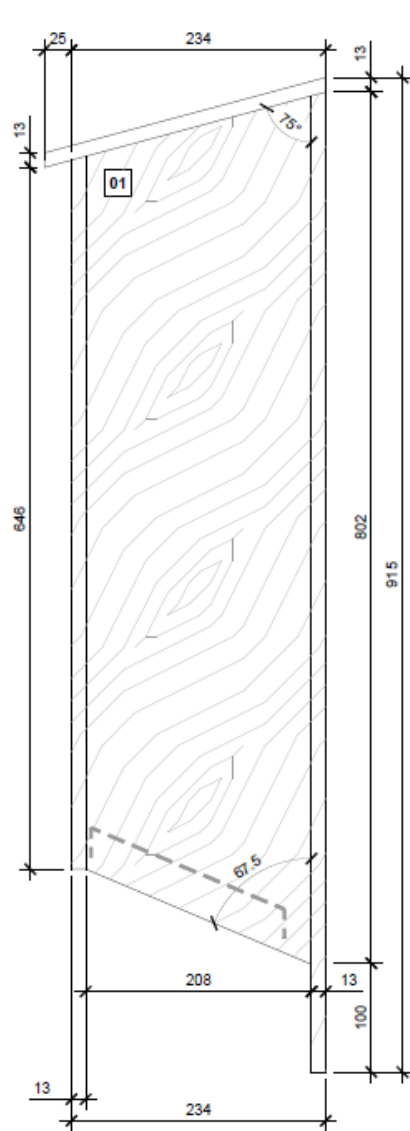
- EXPANDED RIGID INSULATION 50 MM THICK
- 25 MM OPENING
- MAIN CHAMBERS (WARM)
- LIGHTWEIGHT CONCRETE PANAL 6 MM THICK
- PLYWOOD 9 MM THICK WITH 3 MM DEEP GROOVES
- CLAY BRICK 25 MM THICK
- EXPANDED RIGID INSULATION 50 MM THICK
- LOWER CHAMBER (COLD)
- GALVANIZED HARDWARE CLOTH
- PLYWOOD 13 MM THICK WITH 3 MM DEEP GROOVES

LEGEND

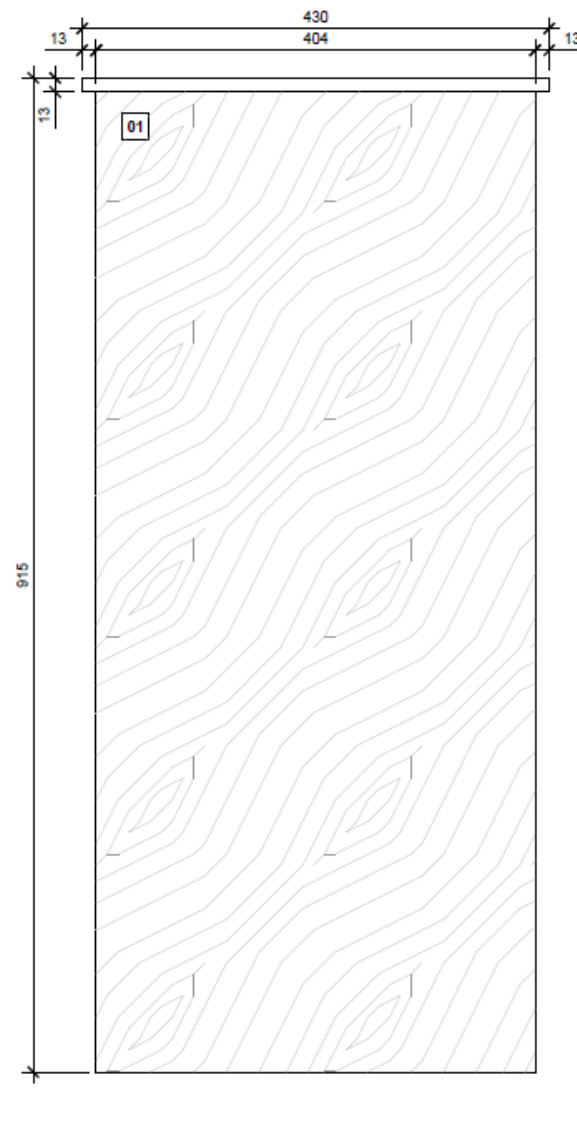
	DIFFUSION
	CONVECTION



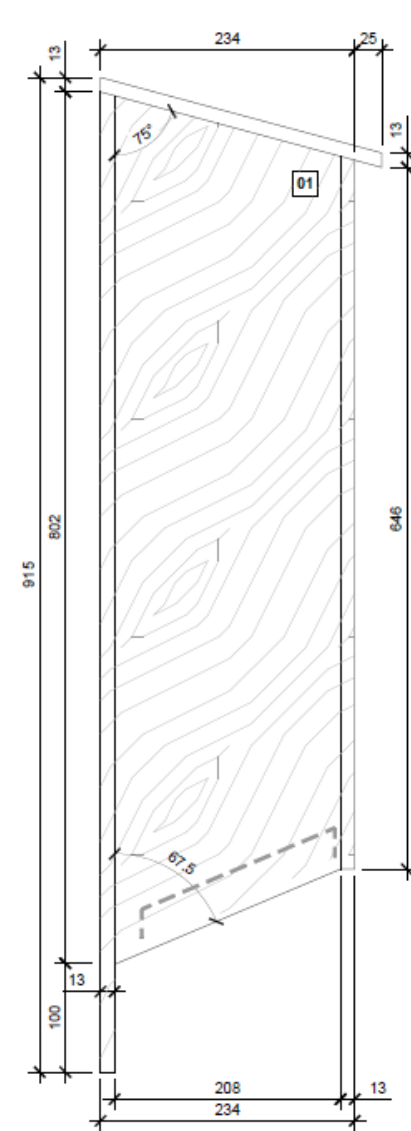
ELEVATION FRONT  
SCALE – 1:5



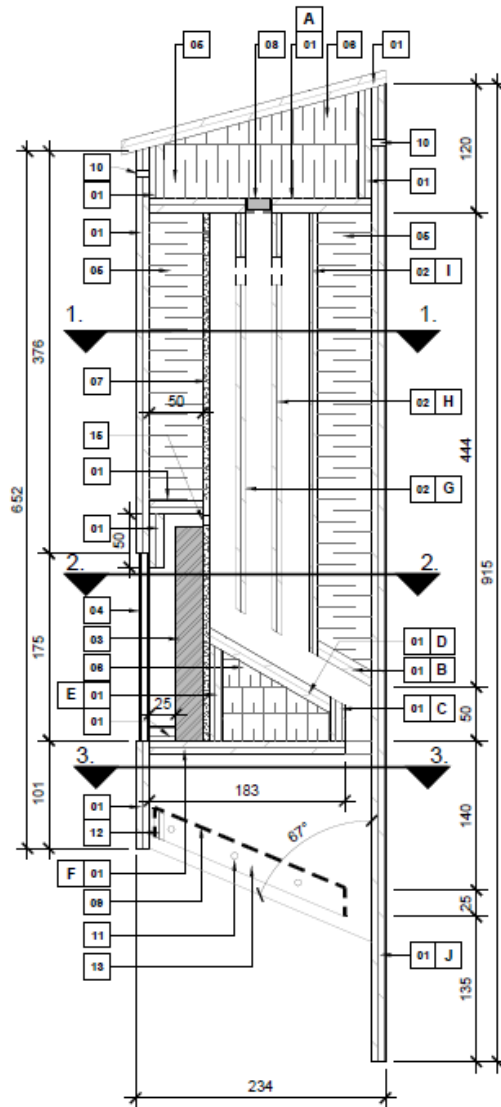
ELEVATION RIGHT  
SCALE – 1:5



ELEVATION BACK  
SCALE – 1:5

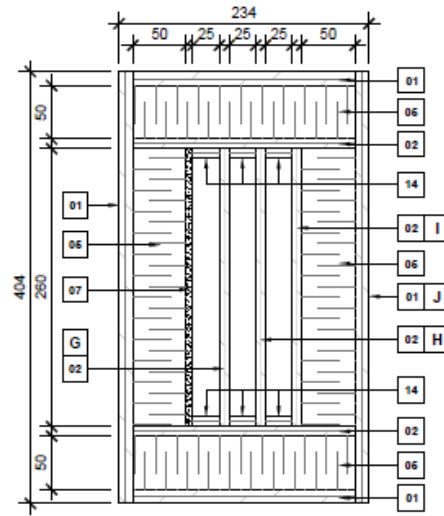


ELEVATION LEFT  
SCALE – 1:5



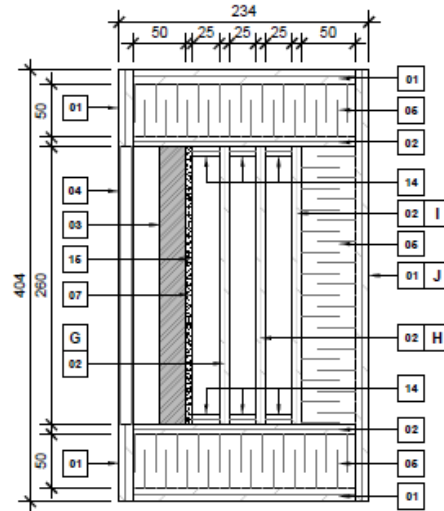
VERTICAL INTERNAL VIEW

SCALE - 1:5



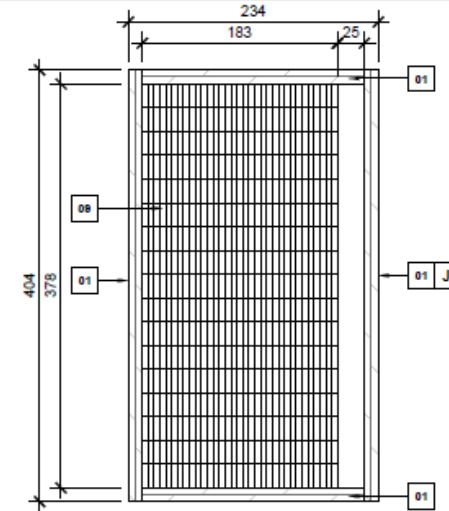
HORIZONTAL INTERNAL VIEW

SECTION 1  
SCALE - 1:5



HORIZONTAL INTERNAL VIEW

SECTION 2  
SCALE - 1:5



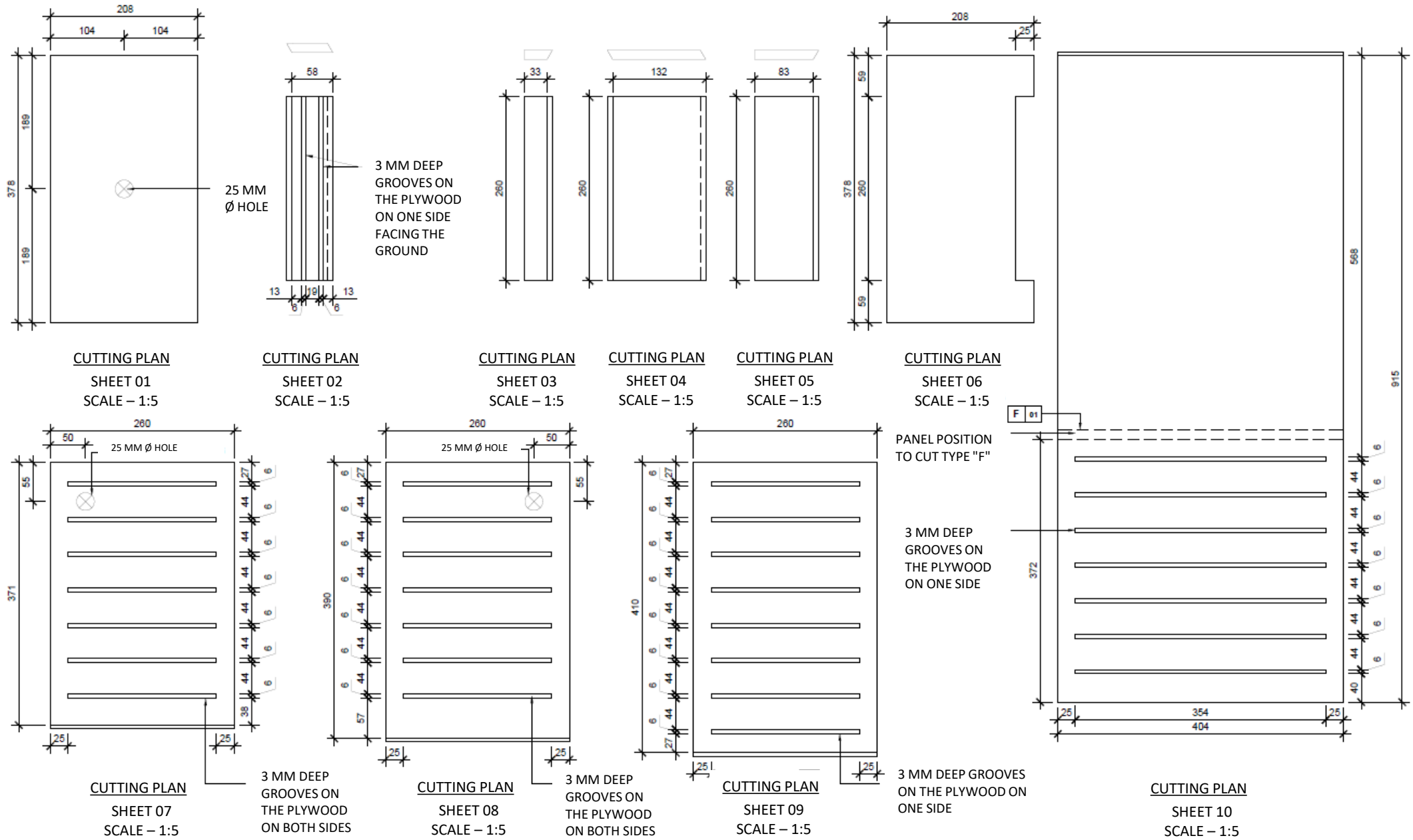
HORIZONTAL INTERNAL VIEW

SECTION 3  
SCALE - 1:5

MATERIALS

- 01 PAINTED PLYWOOD 13 MM
- 02 PAINTED PLYWOOD 9 MM
- 03 CLAY BRICK 25 MM THICK X 95 MM X 192 MM
- 04 ACRYLIC PANEL - CLEAR - 9 MM THICK
- 05 EXPANDED RIGID INSULATION 50 MM THICK
- 06 EXPANDED RIGID INSULATION 50 MM THICK TO CUT TO CREATE SLOPES
- 07 LIGHTWEIGHT CONCRETE PANEL 6MM THICK
- 08 HOLE TO INSERT AN IBUTTON
- 09 GALVANIZED HARDWARE CLOTH
- 10 4 STAINLESS STEEL SCREWS (2 ON EACH SIDE)
- 11 9 STAINLESS STEEL SCREWS (3 ON EACH SIDE)
- 12 1 PLYWOOD 9 MM X 25 MM FIXED WITH SCREWS #6 X 20 CM
- 13 2 PLYWOODS 9 MM X 25 MM FIXED WITH SCREWS #6 X 20 CM
- 14 6 PLYWOOD SRTIPE 9 MM X 25 MM X 350 MM
- 15 4 holes of 9mm of diametre, 50cm appart, above the brick

- A TO CUT THIS PANEL, SEE CUTTING PLAN, SHEET 01
- B TO CUT THIS PANEL, SEE CUTTING PLAN, SHEET 02
- C TO CUT THIS PANEL, SEE CUTTING PLAN, SHEET 03
- D TO CUT THIS PANEL, SEE CUTTING PLAN, SHEET 04
- E TO CUT THIS PANEL, SEE CUTTING PLAN, SHEET 05
- F TO CUT THIS PANEL, SEE CUTTING PLAN, SHEET 06
- G TO CUT THIS PANEL, SEE CUTTING PLAN, SHEET 07
- H TO CUT THIS PANEL, SEE CUTTING PLAN, SHEET 08
- I TO CUT THIS PANEL, SEE CUTTING PLAN, SHEET 09
- J TO CUT THIS PANEL, SEE CUTTING PLAN, SHEET 10



CUTTING VIEW (2)



9285 BOULEVARD L'ORMIÈRE | QUÉBEC | QUÉBEC | G2B 4H4  
A-17 RUE WOLFE | LÉVIS | QUÉBEC | G6V 3X3  
T 418.842.1987 | F 418.842.8298 | INFO@CCM2.CA

ARCHITECTES CCM2.CA

Ncube PH1 2020 bat box

2020.10.15